

UNCLASSIFIED



National Geospatial-Intelligence Agency (NGA)

Disaster Response and Data Availability

Caitlin Johnson, USA

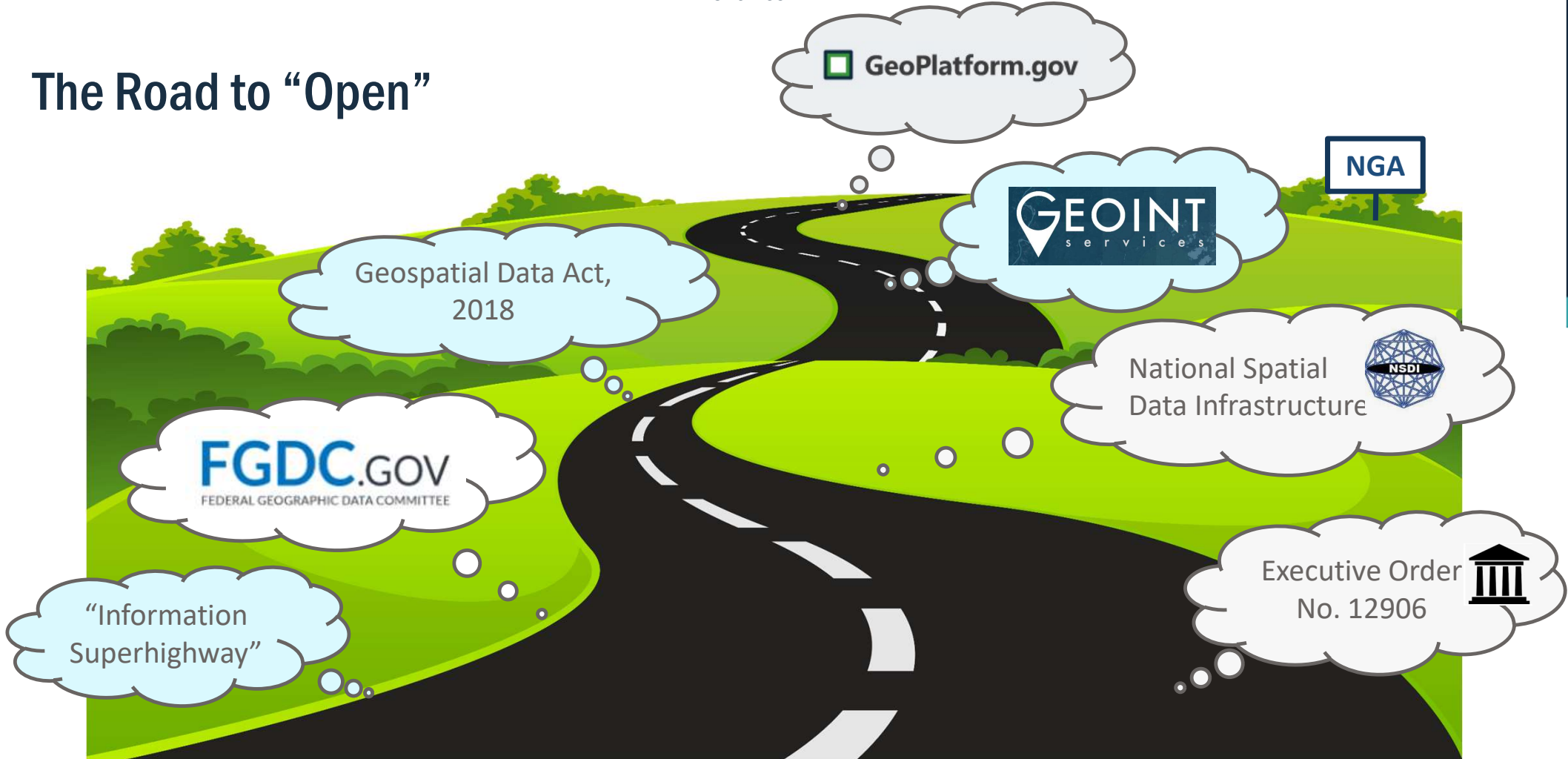
International Seminar on United Nations Global Geospatial Information Management, 10 May 2022

Approved for Public Release, 22-459

UNCLASSIFIED

UNCLASSIFIED

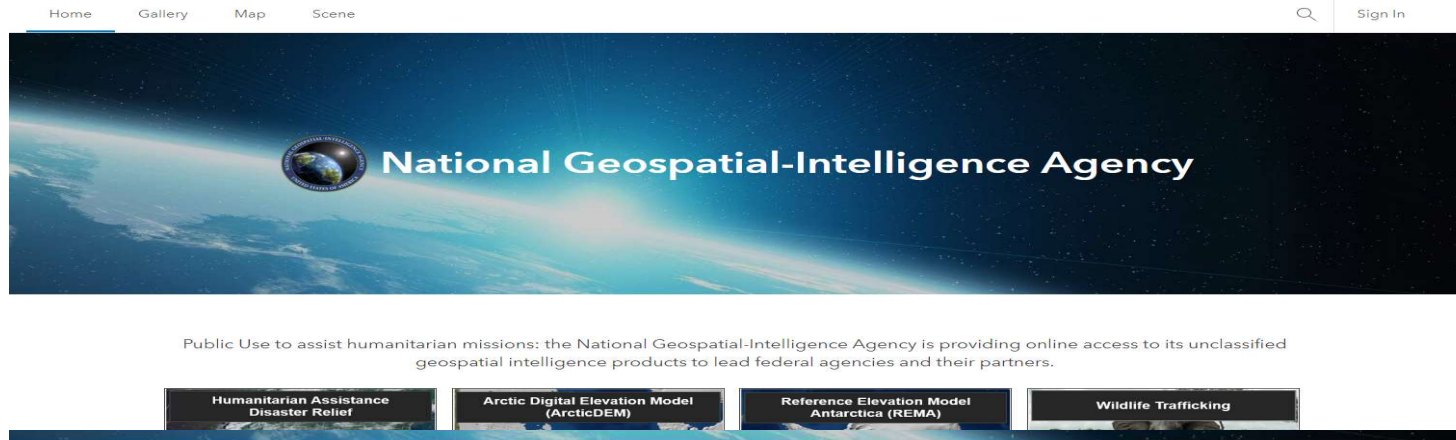
The Road to "Open"



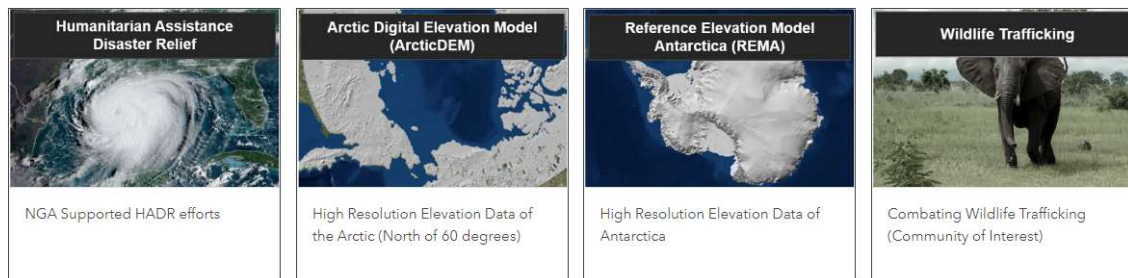
NGA 

UNCLASSIFIED



















Activating NGA



Public Use to assist humanitarian missions: the National Geospatial-Intelligence Agency is providing online access to its unclassified geospatial intelligence products to lead federal agencies and their partners.



Humanitarian Assistance and Disaster Relief

 <p>Hurricane Iota</p> <p>Web Mapping Application</p> <p>2020 NGA - Hurricane Iota Data Gallery (Central America)</p> 	 <p>Hurricane Eta</p> <p>Web Mapping Application</p> <p>2020 NGA - Hurricane Eta Data Gallery (Central America)</p> 	 <p>Tropical Cyclone Idai</p> <p>Web Mapping Application</p> <p>2019 NGA - Tropical Cyclone Idai (Mozambique)</p> 	 <p>Hurricane Dorian</p> <p>Web Mapping Application</p> <p>2019 NGA - Hurricane Dorian (Bahamas)</p> 	 <p>Hurricane Maria</p> <p>Web Mapping Application</p> <p>2017 NGA - Hurricane Maria (Caribbean)</p> 
 <p>Hurricane Irma</p> <p>Web Mapping Application</p> <p>2017 NGA - Hurricane Irma (United States)</p> 	 <p>Hurricane Irma</p> <p>Web Mapping Application</p> <p>2017 NGA - Hurricane Irma (Caribbean)</p> 	 <p>Hurricane Harvey</p> <p>Web Mapping Application</p> <p>2017 NGA - Hurricane Harvey (Texas-Louisiana)</p> 	 <p>Hurricane Matthew</p> <p>Web Mapping Application</p> <p>2016 NGA - Hurricane Matthew (Haiti, Bahamas, and the United States)</p> 	

Humanitarian Assistance and Disaster Relief - Hurricane Matthew



NGA - HURRICANE MATTHEW SUPPORT

SUMMARY

DAMAGE ASSESSMENTS

PRODUCT LOCATIONS

PRODUCTS

DATA

SUPPORTING SITES



PDF

Haiti - South Coast -
Nautical Chart -
26BHA26203_006



PDF

Haiti Displaced
Tracking Matrix (DTM)
June 2016



PDF

Haiti Golfo de la
Gonave - Nautical
Chart -
26AHA26181_021



Image

Haiti Gonaives Port
7Oct16 Gonaives Port

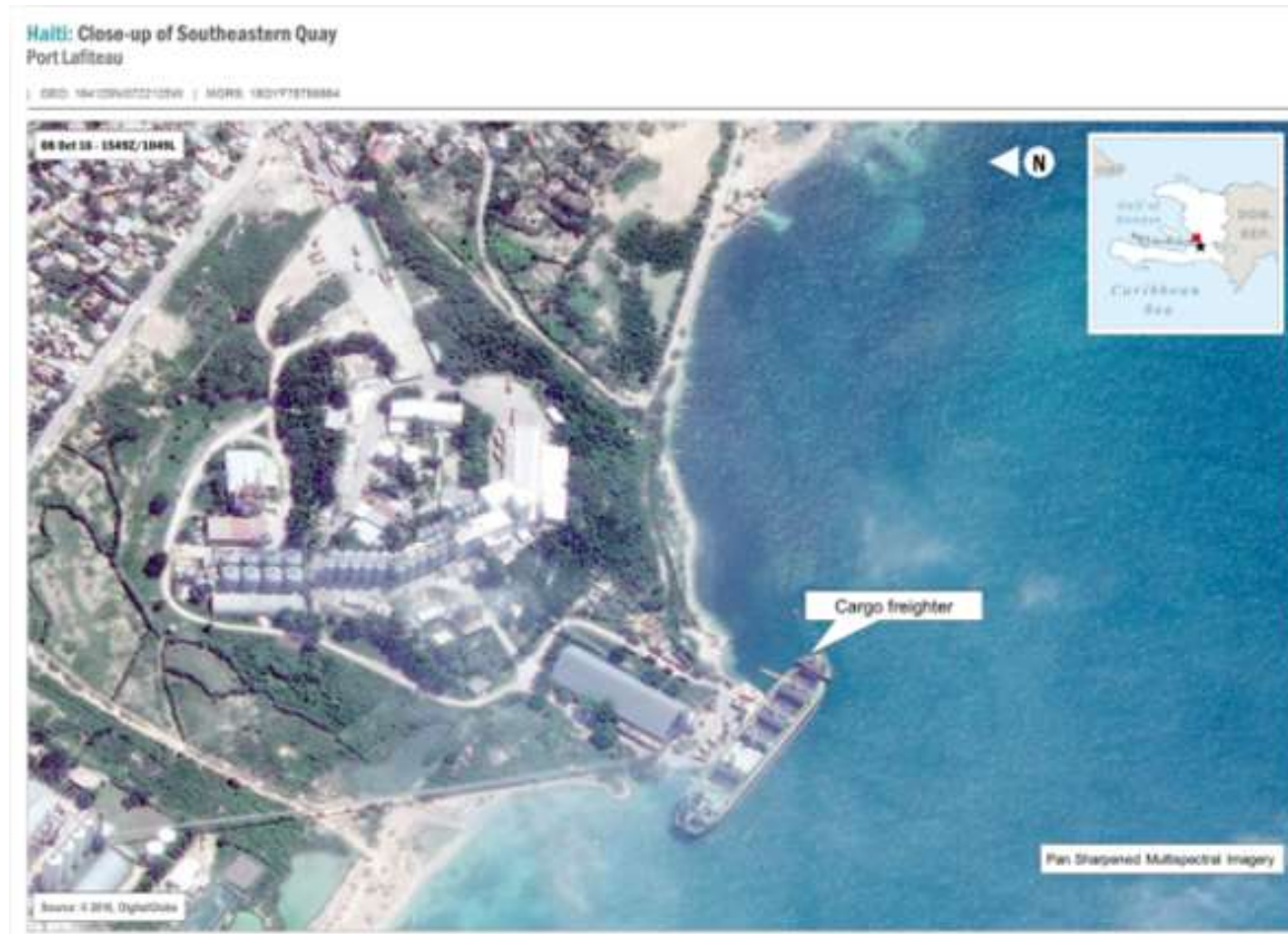


PDF

Haiti Hospital and
NGO Status - PDC

UNCLASSIFIED

Humanitarian Assistance and Disaster Relief - Hurricane Matthew



UNCLASSIFIED

UNCLASSIFIED

Humanitarian Assistance and Disaster Relief - Hurricane Matthew

Haiti: Route 7 (Les Cayes to Jeremie)
Erosion Reduces Route to One Lane

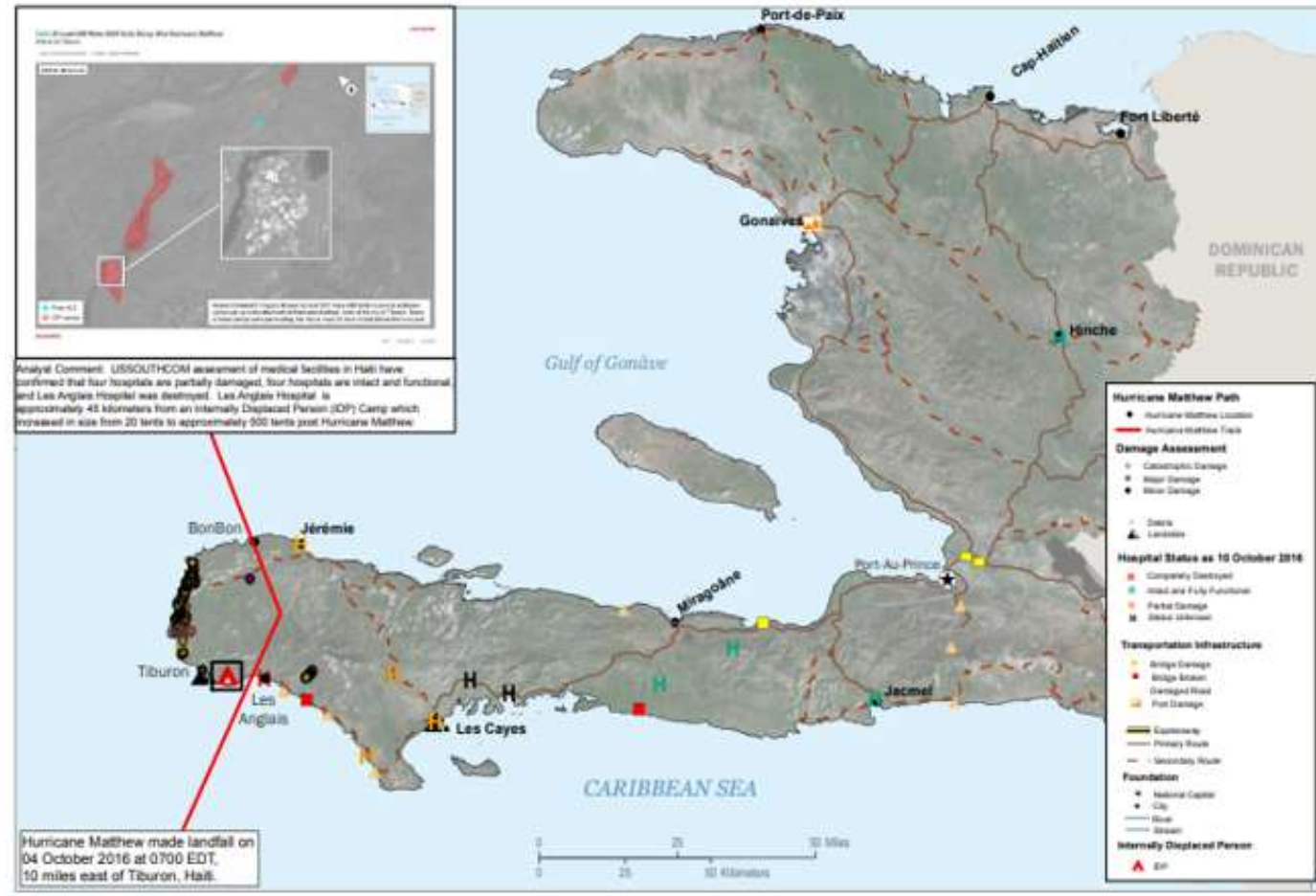
ORIG: 183332N0745556W | MORE: 1834708418232



NGA 

UNCLASSIFIED

Humanitarian Assistance and Disaster Relief - Hurricane Matthew



Humanitarian Assistance and Disaster Relief – Hurricane Matthew



DATA

[\(service link\)](#)

[Quantitative Precipitation Forecast \(service link\)](#)

[Inundation Data \(service link\)](#)

[NWS Nexrad Radar \(service link\)](#)

[Satellite GOES Imagery \(service link\)](#)

[Lightning Strike Density \(service link\)](#)

[NHC GeoRSS](#)

Homeland Infrastructure Foundation-Level Data

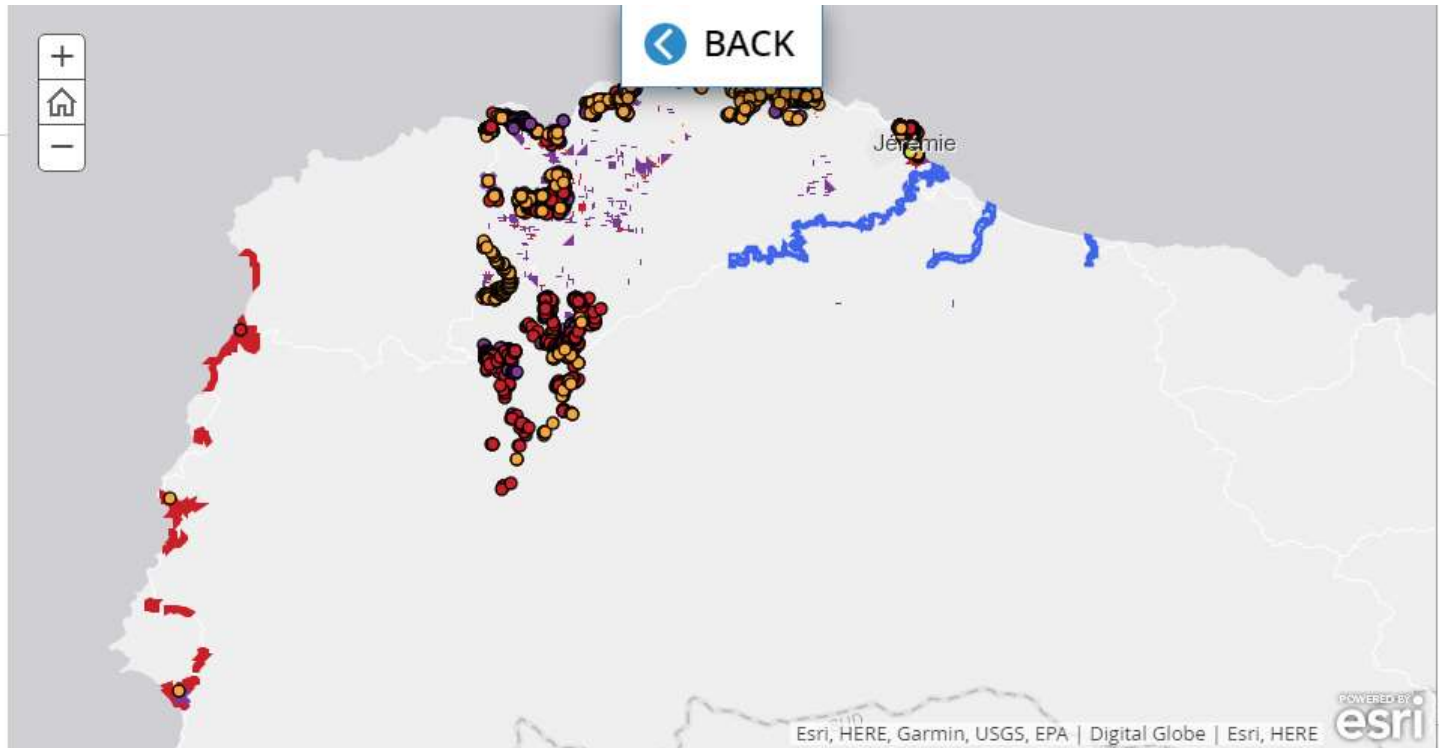
(HIFLD) Open Data [\(portal link\)](#)

World Port Index-Large [\(service link\)](#)

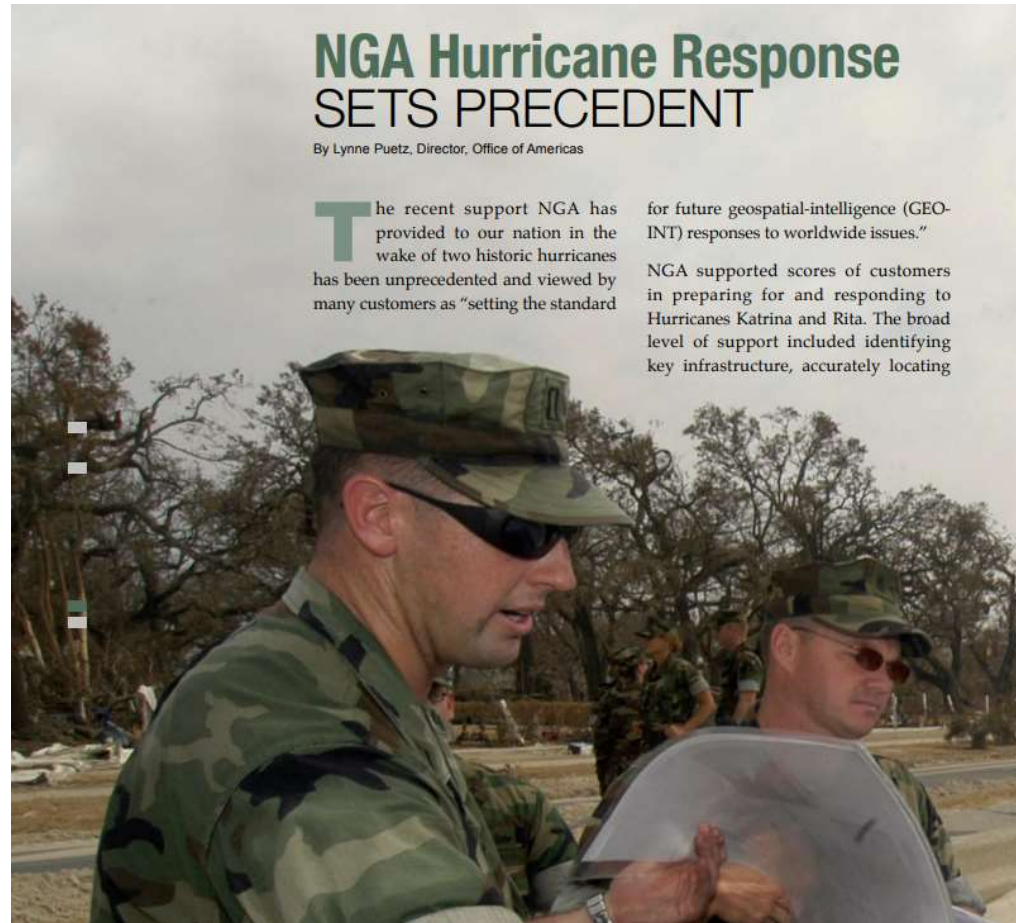
World Port Index-Medium [\(service link\)](#)

World Port Index-Small [\(service link\)](#)

World Airports [\(service link\)](#)



Humanitarian Assistance and Disaster Relief – Hurricane Katrina



UNCLASSIFIED

Humanitarian Assistance and Disaster Relief – Nepal Earthquake



NGA 

UNCLASSIFIED

Arctic Digital Elevation Model (ArcticDEM)

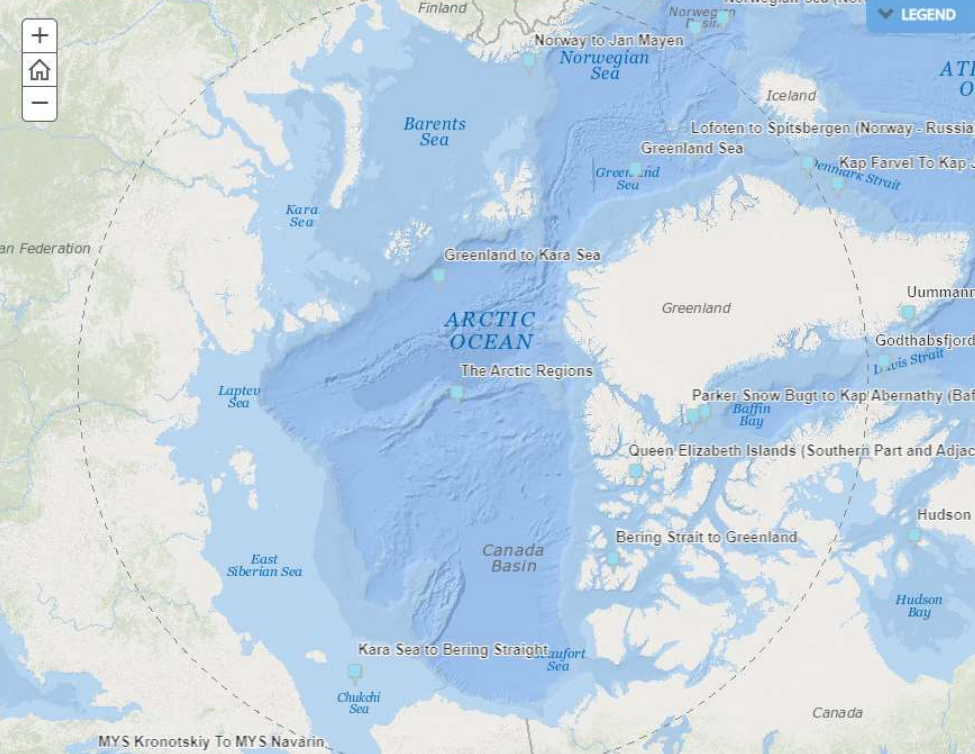
ArcticDEM

SUMMARY
ARCTIC DIGITAL ELEVATION DOWNLOAD TOOL
DATA
MAP PRODUCTS
REFERENCE & RESOURCE MATERIAL

ARCTIC SUPPORT PRODUCTS

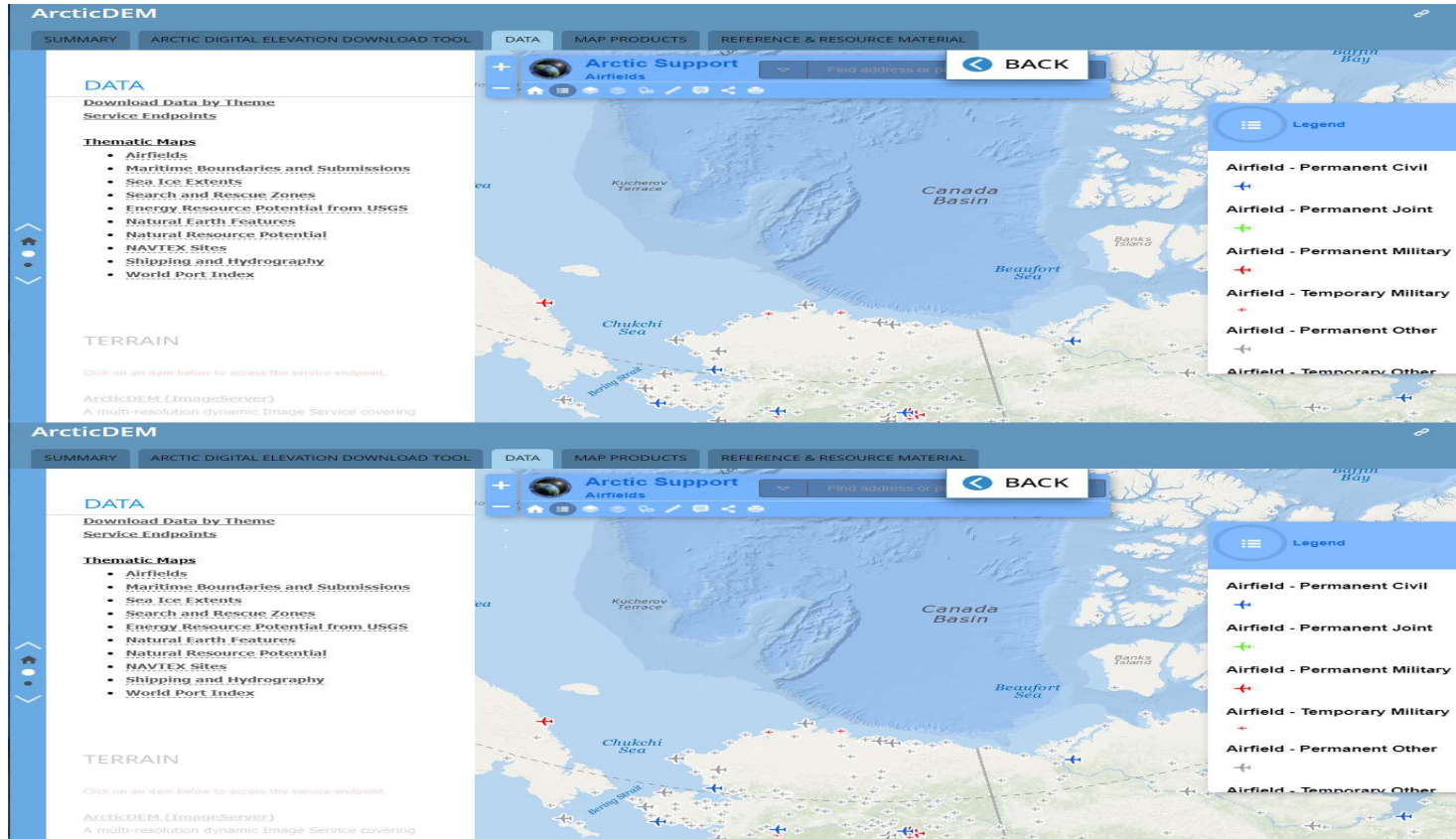
Nautical Charts

- Sailing charts are the smallest scale charts used for planning, fixing position at sea and for plotting the dead reckoning while proceeding on a long voyage. The scale is generally smaller than 1:600,000. The shoreline and topography are generalized and only offshore soundings, the principal navigational lights, outer buoys, and landmarks visible at considerable distances are shown.
- General charts are intended for coastwise navigation outside of outlying reefs and shoals. The scales range from about 1:150,000 to 1:600,000.
- Coastal charts are intended for inshore coastwise navigation, for entering or leaving bays and harbors of considerable width, and for navigating large inland waterways. The scales range from about 1:50,000 to 1:150,000.
- Harbor charts are intended for navigation and anchorage in harbors and small waterways. The scale is generally larger than 1:50,000.



The map displays the Arctic Ocean and surrounding regions, including the Kara Sea, Laptev Sea, East Siberian Sea, Barents Sea, Norwegian Sea, Greenland Sea, and the Bering Strait. It also shows the Canadian Basin and the Queen Elizabeth Islands. Navigation routes are marked with green dots and lines, such as 'Norway to Jan Mayen', 'Greenland to Kara Sea', 'Parker Snow Bugt to Kap Abernathy (Baffin Bay)', and 'MYS Kronotskiy To MYS Navarin'. A legend is visible in the top right corner of the map area.

Arctic Digital Elevation Model (ArcticDEM)

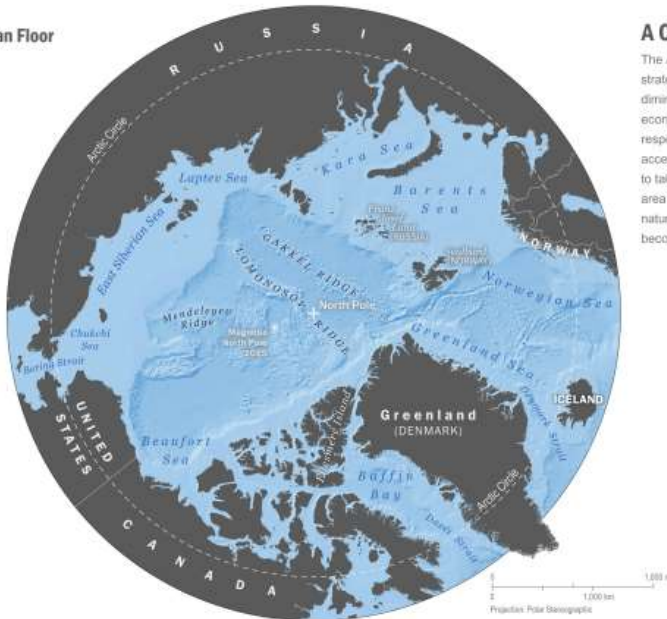


Arctic Digital Elevation Model (ArcticDEM)



NATIONAL GEOSPATIAL-INTELLIGENCE AGENCY
The Arctic: A GEOINT Perspective

Ocean Floor

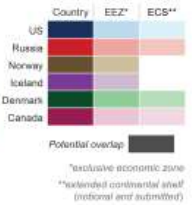


A Changing Landscape

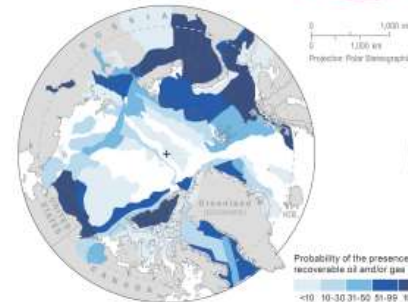
The Arctic is becoming a region of strategic importance; its icecap is diminishing and human activity is increasing in response to the area's growing accessibility. Some countries are trying to take advantage of the more accessible area that is emerging as a source of natural resources as shipping corridors become more apparent.



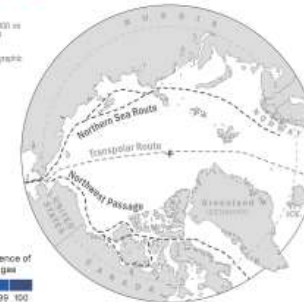
Zones and Submissions



Energy Resources

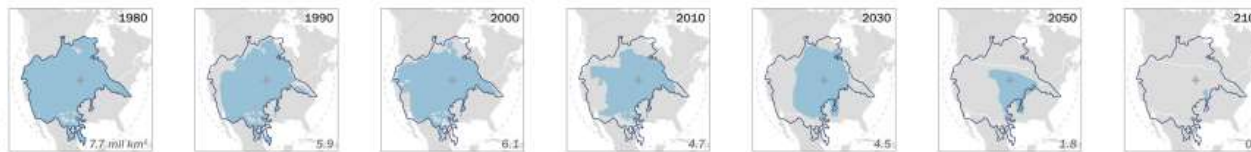


Shipping Routes



Ice Extent

North American area comparison showing minimum sea ice extent and modeled future extent (trillions of square kilometers).



Names and boundary representation are not necessarily authoritative.
 Source: National Snow and Ice Data Center, NOAA ODSI, USGS, US Geological Survey, CARA, US Navy,
 The Force Climate, International Hydrographic Organization, International Oceanographic Commission.



Wildlife Trafficking



Combating Wildlife Trafficking (Community of Interest)

SITE FEEDBACK [↗](#)

CWT PORTAL SUMMARY

DATA

MAP PRODUCTS

REPORTS

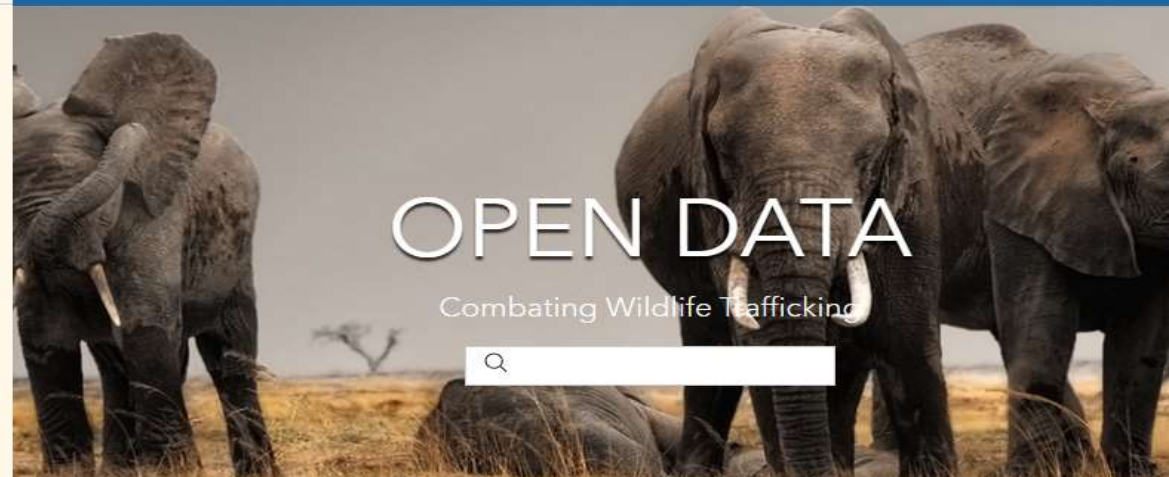
REFERENCE & RESOURCE MATERIAL

CONFERENCES AND MEETINGS

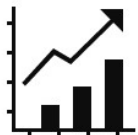
DATA

DATA DISCOVERY and DOWNLOAD

Data is offered for download in several ways. Data can be downloaded as Shapefiles or KML for GIS applications, and CSV for tables and spreadsheets. Additionally, by using the API link, data from this site can be embedded in other applications using either the GeoJSON, GeoService or OGC WMS methods.



Communication/Media Use



Economy



Ethnicity



Group/Organization



Health & Medical



Land Ownership



Land Use/Cover



Religion



Wildlife Trafficking

Combating Wildlife Trafficking (Community of Interest) SITE FEEDBACK [↗](#)

CWT PORTAL SUMMARY DATA MAP PRODUCTS REPORTS REFERENCE & RESOURCE MATERIAL CONFERENCES AND MEETINGS

DATA

DATA DISCOVERY and DOWNLOAD

Data is offered for download in several ways. Data can be downloaded as Shapefiles or KML for GIS applications, and CSV for tables and spreadsheets. Additionally, by using the API link, data from this site can be embedded in other applications using either the GeJSON, GeoService or OGC WMS methods.

Select by Individual Layer - access to multiple formats and services

- Topographic
- Human Geography

Search all datasets by keyword or map region

Select by Entire Theme - download theme as shapefile

515 records

Africa WDPA Protected Locations

OBJECTID_1	397
objectid	397
WDPAID	3060
WDPA_PID	3060
PA_DEF	1
NAME	Sibilobilo
ORIG_NAME	Sibilobilo
DESIG	Safari Area
DESIG_ENG	Safari Area

Zoom to

Wildlife Trafficking

Combating Wildlife Trafficking (Community of Interest)

CWT PORTAL SUMMARY DATA MAP PRODUCTS REPORTS REFERENCE & RESOURCE MATERIAL CONFERENCES AND MEETINGS SITE FEEDBACK

DATA

The Human Security Taxonomy is a list designed for collection in preparation for a disaster. The focus is infrastructure awareness in support of people serviced by that infrastructure, with special attention to intersecting nodes with extended influence. The goal is locally accessible knowledge about risks and strategies related to hazards in many forms: natural, technical, political, and social.

The thematic maps listed below have data categorized according to the WHGD themes. **CLICK on a map name to display.**

- Cultural Heritage Communication and Media Use
- Demographics and Human Population
- Economy
- Education
- Ethnicity
- Groups Organizations
- Health and Medical
- Land Ownership
- Land Use - Land Cover
- Language
- Religion
- Significant Events
- Transportation
- Water Supply and Control

Thematic Map
Ethnicity

Layers

- Kenya/Tanzania BBC Maasai Tribe
- Kenya ILRI Ethnic Tribes (10,000,000)
- Africa HWM Ethnicity

Wildlife Trafficking

Combating Wildlife Trafficking (Community of Interest) SITE FEEDBACK [↗](#)

CWT PORTAL SUMMARY DATA MAP PRODUCTS REPORTS **REFERENCE & RESOURCE MATERIAL** CONFERENCES AND MEETINGS

REFERENCE & RESOURCE MATERIAL

This megaproject has overtaken trophy poaching in depleting wildlife in Zambia

[Washington Post article](#) - July 15, 2016

US Pours Millions into Fighting Poachers in South Africa

[NYTimes Article](#) - December 22, 2105

Wildlife Conservation Society

US Pours Millions into Fighting Poachers

[NYTimes.com](#) (Dec 22, 2015 article)

The Obama administration is stepping up efforts here to combat wildlife poaching, an expanding criminal enterprise in South Africa that has driven several animal species toward extinction and fueled the growth of international gangs



Approved for Public Release, 22-459